

St Ninian's Church
Corstorphine

Quarterly



Autumn 2023



**Edinburgh, Corstorphine St Ninian's Parish Church (Church of Scotland)
144 St John's Road, EH12 8AY
Scottish Charity Number SC016557**

MINISTER: Rev James Aitken
17 Templeland Road, Edinburgh EH12 8RZ
Tel: 334 1324; Email: JAitken@churchofscotland.org.uk

Church Telephones: OFFICE (and Voicemail): 316 4777;
CRUSH HALL (Church Officer): 334 8615
e-mail: office@st-ninians.co.uk
Office Hours: Tue/Wed/Thurs - 9.00am to 12 noon; Fri - 9.00am to 1.00pm
website: www.corstorphinestninians.org.uk

**If you are a visitor to St Ninian's or are reading this magazine for the first time,
the following information may be useful:**

Our SUNDAY SERVICES are held at 10:30am and are followed by fellowship with tea and coffee in the Martin Shields Hall.

COMMUNION SERVICES are at 10:30am and 3:00pm on the first Sundays in March, June, September and December.

During term time PRIMARY SUNDAY SCHOOL is held every Sunday and SECONDARY SUNDAY SCHOOL meets two-weekly, both at 10.25am. A CRÛCHE is available for pre-school youngsters.

The CHOIR leads the Praise under the direction of our Organist, Anne Kirkpatrick, and choir practices are on Thursday evenings from September to May.

The GUILD meets weekly on Tuesday afternoons between September and April, with interesting speakers, teas, and outings.

Volunteer drivers offer a CHURCH TRANSPORT SERVICE for our less able members - see the back page for contact details. Reserved car parking is also available at the rear of the church for anyone who cannot walk far or who prefers to avoid steps - access to the church is by the path to the right of the buildings.

Many Church and non-Church organisations use our premises throughout the week and contact details can be found on the back page.

Dear friends,

‘And God said, “Let us make a human in our image, by our likeness to hold sway over the fish of the sea and the fowl of the heavens and the cattle and the wild beasts and all the crawling things that crawl upon the earth.”’ (Genesis 1: 26)

The above verse is taken from Robert Alter’s magisterial translation of The Hebrew Bible. He says of the verse, “the verb *radah* (‘hold sway’) is not the normal verb for “rule”, and in most contexts in which it occurs it seems to suggest an absolute or even fierce exercise in mastery.”



atop Beinn Alligin, Torridon

This summer the manse family spent two weeks in beautiful, remote Applecross in the north-west Highlands where the weather was better than was forecast, the midgies were few, and the sun shone whenever we needed it to. While there, I read a book about the Highlands called *Hindsight: In Search of Lost Wilderness* by Jenna Watt. Jenna writes about how the vast Highland estates are managed. To understand how this is done well or badly she takes a close look at how estates manage their deer populations.

Jenna is a generation younger than me. It was fascinating to read about her apprehensions for the world she has inherited, and which she will pass on to her generation’s children. She describes suffering from “ecological grief” as climate change makes its impact felt across the globe. She is fiercely sceptical of the way ‘white heterosexual men’ over the centuries have exercised a fierce mastery of misrule over the environment and the lives of other people, particularly women. She is a strong advocate for a gentler engagement with land and people. However, when it comes to the management of the Highlands, she discovers that there are no easy answers. Estates that take a responsible attitude to rewilding still must find ways for people, particularly local people, to make a living from the land. Those that seek to keep the deer population low have no choice but to exercise a brutal regime of stalking. (She herself shoots a hind on a stalk, an experience that upsets her greatly.)

The Scottish Highlands are an example that teach us the truth of Genesis chapter one. Whether we like it or not, human beings exert an enormously distorting effect on the natural world: the fish of the sea, the fowl of the heavens, the cattle and the wild beasts and the crawling things that crawl upon the earth. Now we know that we even have a distorting influence over the climate itself. Whether God deliberately made it that way or was just stating the obvious is beside the point. The truth is, our actions, our rule, our holding sway, affect the planet and all life on it.

So, as Jenna Watt makes clear in her book, what we do matters, and we have no choice but to do something. How Highland estates are managed is a question for landowners, politicians, conservationists, and others. But, we can all pay attention to how we hold sway over the natural world. We make choices every day that affect the planet, the people we live with, and all creation as well as those who will come after us. If we want to exercise a responsible ‘mastery’ - that is, if we want to be responsible managers of this vast estate we call Earth - and love God and one another in a responsible way, we should pay more attention, and tread through our lives gently and with more respect for our neighbours, the creation that we live with, and the planet we live on.

Best wishes,

James

Congregational Register

Baptism:

30 July 2023

Noah Coffey, 2 Essex Road

Funerals:

9 June 2023*

Mrs Isobel Couper, Marian House, Oswald Road

21 June 2023*

Mr Angus Winton, Ladywell Avenue

25 July 2023*

Mrs Henrietta Ross, Murrayfield house

* Denotes member

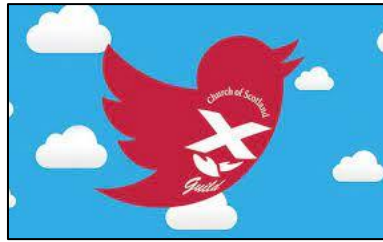
* * * * *

Golden Wedding Anniversary



The anniversary will have passed by the time you read this,
but congratulations to Christine and Alec Millar,
married in St Ninian's by Rev Colin Martin on 4th August 1973.

St Ninian's Guild



It's that time again when our thoughts turn to our Autumn and Winter activities. Our Guild members are looking forward to the start of their new session at 2.15 pm on Tuesday 3 October with our famous afternoon tea. Anyone is welcome to come and if you decide that this is somewhere that you would like to be each Tuesday then membership is free for your first year. You may wish to just dip in when you see something interesting in our programme.

Of course the whole programme is interesting with talks on a variety of topics - secret tunnels in Edinburgh, music in the 60s, looking at the saints, travels to other countries, reaching out to others and more, much more. Some will be introduced by weel-kent faces while we shall be introducing new faces as well.

Come and enjoy our fellowship. Have no fear; you will not be put on a committee; we don't have one! Everyone has ownership of our Guild and everyone's contribution is appreciated. Our plan is to share faith, fellowship, friendship and fun ... come and find out what that includes!

We still have another Summer meeting at 2.15pm on Tuesday 5 September when we shall celebrate Summer Holidays - any one. Everyone is welcome, please bring a story.

Valerie Thomson

* * * * *

Corstorphine Literary and Geographical Society

The relaunch from March to June was successful and so a new session is planned from September 2023 to June 2024 but omitting January and February. Meetings will be on the first Monday of each month at 7.45 pm here in the Burns Hall. A letter has been sent to each person who attended any of the relaunch meetings and posters are on display in many places in Corstorphine. The Society is publicised in the Grapevine and on local Facebook sites. It would be encouraging to have many joining as members. The subscription will be £25 for the session and £4 for a visitor.

The opening meeting on 4 September will be a presentation about the Briggers - the men who built the Forth Rail Bridge. The programme includes The Lost Songs of St Kilda, The Maiden (a book based on its use in Corstorphine), how the Astoria Organ was brought back to Corstorphine and other interesting topics.

Reminders will be in the Intimations each Sunday but please feel encouraged to attend to support our Society, founded in 1880 and, hopefully, on course for many more years. We shall be pleased to have your help in the Lit Group with any practical issues, eg setting out the chairs, but you need not be on a committee....many hands will make light work!

Contact the Secretary, Valerie Thomson, with any queries or comments (339 6115)

St Ninian's Parish Church

FRIENDLY CORNER



Tuesdays and Thursdays - 11am - 1pm

Coffee and Tea

**A chance to blether and make friends
or just enjoy a change of scene.**

All Welcome, No Commitment

FRIENDLY CORNER

TUESDAYS & THURSDAYS 11:00am - 1:00pm

‘A chance to blether and make friends, or just enjoy a change of scene.’

Over the summer, St. Ninian’s Cosy Corner has become Friendly Corner.

One of the most enjoyable outcomes of Cosy Corner, our winter project to offer a warm space to the local community, was the friendships that were made and the conversations that were enjoyed between volunteers, church members and others visiting.

In the Spring we decided to build on that particular success and offer a space for everyone who might enjoy a bit of company, a cup of tea or coffee and a biscuit, and a good old chat during the week. After a break of a couple of months we reopened at the beginning of June as Friendly Corner.

Since then, Friendly Corner has been going like a fair. People drop in - church members, locals, students, members of other churches - and enjoy meeting people they know and people they don’t, old friends and new friends. For some it is an important part of their week, for others it’s an occasional outing.

As minister I am delighted to see St. Ninian’s reaching out to offer something friendly and loving to members of our congregation and the wider Corstorphine community. It has been very encouraging to see local people notice St. Ninian’s and meet its members. It has been heart-warming to hear stories about the ways the company, conversations, and friendships that Friendly Corner offers have lifted people’s spirits and helped them feel supported and valued.

If you have a free minute, 10 minutes, half an hour, or an hour or more on a Tuesday or Thursday morning, why not drop in and see for yourself. Friendly Corner is in the Beith Hall (come in from the front of the church on St. John’s Road), there will always be someone there between 11:00am and 1:00pm on Tuesdays and Thursdays.

If you would like to know more, or even better if you would like to volunteer, then speak to me or Fiona Coutts. There will be a meeting on the 10th of September to review the summer and plan for the autumn and winter, come along and hear what it is like to be part of Friendly Corner.

*your Minister,
James*



A big thank you to all who arranged the various events and to those who so generously donated to Christian Aid Week in May 2023.

Since the conclusion of Christian Aid Week, further donations have been received and the final amount raised has risen to **£2,966.41**.

Within that total, the Primary Sunday School raised £333 by taking part in a "Pass the Peas" challenge and baking delicious Pigeon Pea biscuits; the Coronation Lunch raised £649.10; and the Christian Aid Quiz raised £61.

A huge 'thank you' to Susanne Hope who will be undertaking the Kiltwalk again on Sunday 17th September. She will be doing the Big Stroll which is 14.7 miles. We will be collecting donations for Susanne's challenge on Sundays 3rd and 10th September.

Thank you for all your support.

Alec Millar

Christian Aid Co-ordinator

Tel : 334 1471 or alec.w.millar@blueyonder.co.uk

Primary Sunday School

We had a busy time last term with the highlight being Christian Aid Sunday where we raised an amazing £330 for "The Big Pea Challenge". This was an obstacle course for the children to navigate in teams while balancing dried peas on a plate, they were timed and the team with the most peas on their plate at the end of the obstacle course were the "Chicken Nuggies" - their name, not mine. As well as the obstacle course we also raised money by baking and selling after Church "Pigeon Pea" biscuits which tasted better than they looked or smelled! We used a recipe from farmers in Malawi who receive Christian Aid support. It was a challenge finding "Pigeon Peas" so we used yellow split peas, but the idea was the same - to create protein-filled biscuits.



On Sunday 28th May, we had the baptism of Florence Luke, and a number of the children and parents from the Baptismal party joined us in Sunday School for biscuit decoration and flame flags. It was quite hectic but great fun!

At the beginning of June when we were all enjoying the beautiful weather, we took Sunday School out into the garden and played with “Bouncing Bubbles” where we learnt that God is with us as we share what we know about him with others. The idea was to pass the bubbles on, but I am afraid most of them popped before we were able to do that.

We look forward to welcoming the children back on Sunday 23rd August and, hopefully, the Roots resource will provide us some more fun and informative activities for the coming term.

Barbara Mackie

* * * * *

Fabric Committee

We are continuing to progress the list of repairs to the Church and Manse buildings requested by the Presbytery inspectors. The urgent items have been completed including roof repairs to one of the Manse garages. Cast iron gutter repairs and renewals to the Burns Hall and Church are in hand.

Vent shaft grilles were fitted in the Burns Hall roof and this appears to have resolved the pigeon problem. Fingers crossed!

The oak seat at the Church dais was unsafe due to loose joints and was taken off to be tightened and secured.

Our thanks go to Bob Brewster for repairing a broken step at the rear entrance and repainting all the step edges.

The Scottish Fire and Rescue Service are no longer responding to fire alarm activations in non-domestic properties until an actual live fire is confirmed. Their decision was based on the large number of false alarms which occurred, resulting in wasted fire appliance journeys. We are therefore upgrading our detectors to ones which recognise live fires and automatically call for fire engine attendance.

Alister McGlashan

Convener

Mission Committee

As in the last two years we have collected groceries etc for The Broomhouse Food Project, once again we hope to have a food collection on Harvest Thanksgiving Sunday 1st October. Lists of suggested items will be intimated prior to then.

We are in the process of deciding on this year's Congregational Christmas Card. Since the start of Covid we have been using a delivery firm to distribute the Christmas cards. However, after discussion with the Minister, we feel now is the time to move on and deliver the cards ourselves. The cards will be ready for distribution in mid-November and we will be hoping for sufficient volunteers to deliver the cards then.

Remembrance Sunday is on 12th November and, as previously, we are hoping to have a retiral collection to raise funds for refugees living in Edinburgh. These funds will be used towards the cost of hampers in time for Christmas. Again, we will be hoping for volunteers to deliver these hampers in December.

Once again, we intend to distribute Bags of Hope to members who are now not able to attend Church services.

We look forward to a busy time ahead with your support.

Margaret Hunter
Convener

* * * * *

The Heavenly Swing!

Bremen in Germany is one of my favourite smaller cities. I had visited briefly many years ago and always wanted to spend more time there. When Germany introduced a Travel Pass last year as a result of the Russian invasion of Ukraine, cutting off their main supply of gas and oil, I had already booked flights to spend a fortnight seeing friends in Bavaria. The unexpected wartime bonus for me then was a ridiculously inexpensive monthly Travel Pass, and this year in May it became available once again.



I flew to Berlin on the morning of June first and returned home on the last flight from Hamburg at the end of the month. Bremen was on day 23, so on the Sunday I went to worship in a beautiful old church, which is nearly as old as their magnificent cathedral. The Church of Our Lady is called Unser Liebfrauenkirche, which immediately called to mind the well-known wine, no connection obviously. Its history covers 1,000 years at first as the Market church and then the Town Hall church. It's called an Evangelical Protestant church, but not what we mean by evangelical.

I admired the beautiful modern stained-glass windows by the French artist Alfred Manessier, which cast glorious colours into the interior from several sides. These contrasted with the more traditional old windows.



What amazed me was the 14-metre-long ropes which are attached directly behind the high altar, holding a swing! After the church service you were invited to feel weightless and swing high into the air. It is locally known as the Heavenly Swing. A YouTube posting from 2018 describes it as the Massive church swing and it was originally installed during 2018 as a temporary arrangement.

The central square in Bremen is enormous and is dominated by the cathedral, the town hall, the flower market, play areas, sculptures, fountains, and many cafes and restaurants with outdoor terraces. Most famous attractions are the enormous statue of Roland and the main draw for selfies and city tours is in the shadow of the cathedral, Bremen's sculpture of 4 animal-musicians standing one atop the other. A famous Brothers Grimm fairytale tells the moral tale of the faithful animals whose master had no use for them when they became old. The donkey, dog, cat and rooster set off to live contentedly in Bremen and the famous statue of them, put in place in the early 1950s, brings visitors good luck if they know what to do. You need to grab hold of both front legs of the donkey simultaneously.

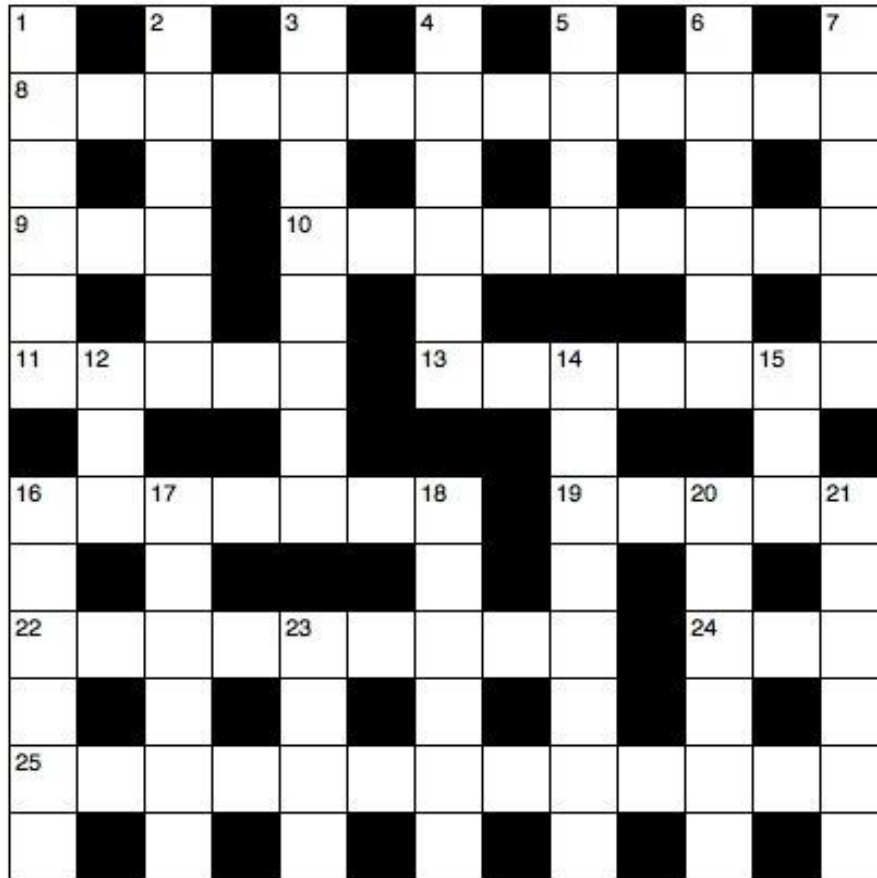
Many of us will be familiar with the church's famous composer who was baptized there and was employed as the organist, and sadly died aged just 30. We sing his hymn to this day in both countries. Johannis Neander composed Lobe den Herren, 'Praise to the Lord the Almighty the King of Creation'.

Suzette Bell

* * * * *

When things go wrong, as they sometimes will,
When the road you're trudging seems all up hill,
When the funds are low and the debts are high,
And you want to smile but you have to sigh,
When care is pressing you down a bit,
Rest if you must but don't you quit.
Life is queer with its twists and turns,
As every one of us sometimes learns,
And many a failure turns about
When he might have won had he stuck it out.
Don't give up though the pace seems slow,
You may succeed with another blow.
Success is failure turned inside out -
The silver tint of the clouds of doubt,
And you never can tell how close you are.
It may be near when it seems so far:
So stick to the fight when you're hardest hit -
It's when things seem worst that you
Must Not Quit.

Anon: thanks to Jenny Taylor



Across

- 8 Where the Ark of the Covenant was kept for 20 years (1 Samuel 7:1) (7,6)
- 9 One of the parts of the body on which blood and oil were put in the ritual cleansing from infectious skin diseases (Leviticus 14:14–17) (3)
- 10 Uncomfortable (3,2,4) 11 'Yet I have loved Jacob, but Esau I have —' (Malachi 1:3) (5)
- 13 Where Paul said farewell to the elders of the church in Ephesus (Acts 20:17) (7)
- 16 'Jesus bent down and — to write on the ground with his finger' (John 8:6) (7)
- 19 Prophet from Moresheth (Jeremiah 26:18) (5)
- 22 Comes between Exodus and Numbers (9)
- 24 and 2 Down 'Then Elkanah went home to Ramah, but the boy ministered before the Lord under — the —' (1 Samuel 2:11) (3,6)
- 25 There was no room for them in the inn (Luke 2:7) (4,3,6)

Down

- 1 Rough drawing (2 Kings 16:10) (6)
- 2 See 24 Across
- 3 Underground literature (including Christian books) circulated in the Soviet Union (8)
- 4 Lo, mash (anag.) (6)
- 5 The Bible's shortest verse: 'Jesus —' (John 11:35) (4)
- 6 'Can a mother forget the baby at her — and have no compassion on the child she has borne?' (Isaiah 49:15) (6)
- 7 Can be seen in a dying fire (Psalm 102:3) (6)
- 12 'Send me, therefore, a man... experienced in the — of engraving, to work in Judah and Jerusalem' (2 Chronicles 2:7) (3)

- 14 Second city of Cyprus (8)
- 15 United Nations Association (1,1,1)
- 16 One of the women who first heard that Jesus had risen from the dead (Mark 16:1) (6)
- 17 Braved (anag.) (6)
- 18 — of Evangelism, outreach initiative in the 1990s (6)
- 20 ‘Woe to those who are wise in their own eyes and — in their own sight’ (Isaiah 5:21) (6)
- 21 ‘Neither — nor depth... will be able to separate us from the love of God’ (Romans 8:39) (6)
- 23 What Jesus shed in 5 Down (4)

[Answers on a later page!]

* * * * *

Wordsearch

For some reason, the Church gives thanks for angels in September. The 29th is the feast day of Michael and All Angels. Since the days of Genesis, these messengers of God have been sent many times to intervene for the good in human affairs. Angels guarded the Garden of Eden, they led Lot away from Gomorrah, they helped Gideon, they stopped Balaam, they closed the mouths of lions for Daniel, and, most important, the archangel Gabriel was sent to tell Mary that she would mother the Messiah. Angels sat in the empty tomb of Jesus and told of His Resurrection. Revelation is teaming with angels, sent on all sorts of missions by God in the last times. Today, many Christians in the world’s hot spots report having had angels help them when in mortal danger.

A	E	E	A	E	G	N	M	M	E	D	R	D
O	L	N	E	D	R	A	G	O	A	D	O	A
L	R	F	N	R	G	H	B	A	T	R	O	N
S	R	E	E	S	C	H	U	R	C	H	Y	G
H	I	A	V	L	E	A	H	C	I	M	E	E
T	D	S	R	E	G	N	E	S	S	E	M	R
U	A	T	E	G	L	S	T	A	D	E	L	R
O	N	L	T	N	B	A	L	A	A	M	G	A
M	I	I	N	A	E	L	T	H	A	N	K	S
O	E	O	I	H	A	G	N	I	M	A	E	T
L	L	N	V	C	G	I	D	E	O	N	T	K
I	O	S	G	R	M	I	C	N	D	N	E	R
S	H	T	N	A	R	O	G	H	N	E	I	T


- | | |
|--|---|
| <ul style="list-style-type: none"> CHURCH FEAST MICHAEL ALL GENESIS MESSENGERS GOD SENT INTERVENE GARDEN EDEN THANKS ANGELS | <ul style="list-style-type: none"> BALAAM MOUTHS LIONS DANIEL GABRIEL MARY MOTHER TEAMING REVELATION DANGER ARCHANGEL LOT GIDEON |
|--|---|

The tale of the Wheat and the Weeds

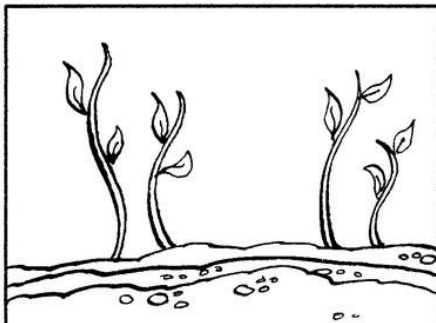
JESUS OFTEN TOLD STORIES WITH HIDDEN MEANINGS



ONE WAS ABOUT A MAN WHO SOWED SEED IN HIS FIELD.



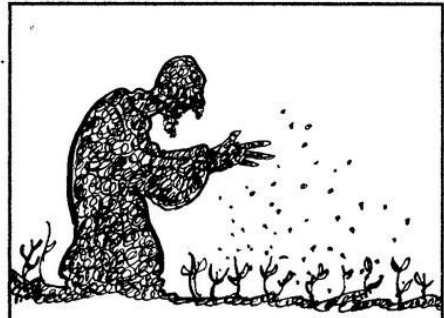
THE SEED TOOK ROOT, AND SOON STRONG PLANTS BEGAN TO GROW.



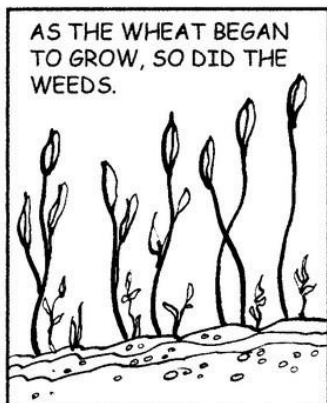
BUT ONE NIGHT, WHEN EVERYONE WAS ASLEEP...



... AN ENEMY OF THE MAN, CROPT INTO THE FIELD, AND SOWED SEEDS AMONGST THE WHEAT.



AS THE WHEAT BEGAN TO GROW, SO DID THE WEEDS.



WHEN THE SERVANTS SAW THE WEEDS THEY SUGGESTED RIPPING THEM OUT.



NO, LET'S LEAVE THEM UNTIL HARVEST TIME!



IF YOU PULL THEM UP NOW, YOU MIGHT KILL THE WHEAT TOO. WE'LL SORT THEM OUT AT HARVEST.



WHEN THE WHEAT WAS READY, IT WAS HARVESTED INTO HUGE BUNDLES.



BUT THE WEEDS WERE BURNED IN A LARGE FIRE.



THE PARABLE TELLS US THAT ALTHOUGH WE LIVE ALONGSIDE BADNESS, WE CAN KEEP SEPARATE FROM IT.

(from resources on the website 'Parish Pump', as are the Wordsearch and Crossword)

From St Ninian's Prayer Diaries, 2004 - 2006

Lord, let me walk with you and know your peace.
May my life speak of you,
And my whole being wait on you,
to hear your Word and do your will,
my Lord and my God.

We are pilgrims on a journey
And companions on the road;
We are here to help each other
Walk the mile and bear the load.

(from the hymn Brother, Sister, let me serve you)

Make us worthy, Lord, to serve our fellow
human beings throughout the world who live
and die in poverty and hunger. By our
understanding love, give them peace and joy.

(Mother Theresa of Calcutta)

Heavenly Father, we love you
Because you first loved us.
Yet our love for you is so feeble
While your love for us is so strong.
Teach us more of your love,
That we may love you better;
And help us to show our love for you
By our love for others.

(Based on 1 John, 4:19)

* * * * *

Crossword Answers

ACROSS: 8, Kirith Jearim. 9, Toe. 10, Ill at ease. 11, Hated. 13, Miletus. 16, Started. 19, Micah. 22, Leviticus. 24, Eli. 25, Mary and Joseph.

DOWN: 1, Sketch. 2, Priest. 3, Samizdat. 4, Shalom. 5, Wept. 6, Breast. 7, Embers. 12, Art. 14, Limassol. 15, UNA. 16, Salome. 17, Adverb. 18, Decade. 20, Clever. 21, Height. 23, Tear.

Past Times in St Ninian's

25 years ago, from the Quarterly, Autumn 1998

Fabric News

“... A large item of unplanned expenditure during the summer involved the church steeple. As the result of a video survey at the beginning of July, it was discovered that the weathervane on top of the steeple was in a dangerous state, so it was deemed necessary to have it removed. Scaffolding was erected round the steeple and the weathervane removed. The survey also revealed that a fair amount of stonework required repair and pointing and, since the scaffolding was in place, the opportunity was taken to have this work carried out at the same time. At the time of writing, the total cost of this work was not finalised but it will be considerable. It is not intended to reinstate the weather vane in the immediate future but, hopefully, one day this will be achieved.” *Douglas Ramsay* [Fabric Convener]



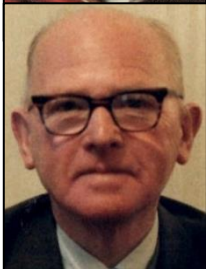
This 1995 photo shows the weathervane rising precariously above the top of the steeple.

50 years ago, from the Quarterly, October 1973

From *Minister's Notes* by the Rev Colin R Martin:



“It is with considerable pleasure that I inform you that Miss Janet M Mackay has been appointed Superintendent of the Sunday School. Miss Mackay has a very deep and informed knowledge of Sunday School work in St Ninian's in both its teaching and administrative aspects and brings a wealth of experience and expertise in different departments to her new task. Miss Mackay is a person of much dedication in her Christian work and witness, and we pray that God will richly bless her in this further responsibility.



“In welcoming Miss Mackay we express also our sincere gratitude to her predecessor, Mr J Arthur, for the very considerable contribution he has made to the life of our Sunday School as Teacher, Departmental Leader and Superintendent. He has been largely responsible for the operation of our first full period with the teaching material we use, and this has involved him in much effort and demanded much commitment, unstintingly given.”

St.Ninian's Church, Corstorphine
General Fund Statement of Receipts and Payments for the period ended 31st July, 2023

General Fund - Summary

	2023 Actual	2022 Actual	Variance	
Total Receipts	108,589	102,642	5,947	●
Total Ordinary General Expenditure	(116,748)	(102,312)	(14,436)	●
General Fund - Surplus (Deficit)	<u>(8,159)</u>	<u>330</u>	<u>(8,489)</u>	●
Legacies Received	-	19,214	(19,214)	●
TOTAL	<u>(8,159)</u>	<u>19,544</u>	<u>(27,703)</u>	●

General Fund - Analysis of Receipts & Payments

Receipts

Congregation Offerings (inc. Gift Aid)	77,831	86,014	(8,183)	●
One-off Donations	169	322	(153)	●
Contributions from Congregational Organisations	1,055	-	1,055	●
Contributions from outside organisations for use of halls	20,091	12,688	7,403	●
Bank Interest and Investment Income	4,789	2,086	2,703	●
Other Receipts	4,654	1,532	3,122	●
	<u>108,589</u>	<u>102,642</u>	<u>5,947</u>	●

Expenditure

Giving to Grow contributions / Presbytery Dues	(52,812)	(55,950)	3,138	●
Local Salaries, Social Security & Pension Costs	(20,538)	(21,891)	1,353	●
Office / Administration Costs	(3,265)	(4,977)	1,712	●
Fabric Expenditure	(23,373)	(5,316)	(18,057)	●
Premises running costs (halls & manse)	(12,336)	(11,322)	(1,014)	●
Other Local Costs	(4,424)	(2,856)	(1,568)	●
	<u>(116,748)</u>	<u>(102,312)</u>	<u>(14,436)</u>	●

COMMENT

As at 31st July, there is a deficit on the General Fund of **£8,159** which is a decrease of **£8,489** on the position for the same period in 2022. The difference can be explained as follows:

Higher Income = Increase in surplus of £5,947

- With the exception of Offerings and one-off donations all other areas of income have increased
- Increases include: Hall Rental **£7,403**; Contributions from Congregational organisations **£1,055**; Interest & Investment Income **£2,703** and Other Receipts **£3,122**.
- The decrease in Offerings of **£8,183** was due to some large donations made in 2022.

Higher Costs = Reduction in surplus of £14,436

- There were cost savings in the following areas: Giving to Grow contributions & Presbytery dues **£3,138**; local salaries (which excludes cleaning costs) **£1,353** and Office Admin costs **£1,712**.
- The main areas of increase were: Fabric expenditure **£18,057** due to continued maintenance of the halls and manse; Premises running costs **£1,014** which includes cleaning costs previously reported under salaries; Other local costs **£1,568** due to higher fees and charges and miscellaneous expenses.

Taking account of legacies received the decrease on the position as at 2022 is **£27,703**.

Janice Reynolds (Treasurer)